

Access to different areas of St George's Chapel for Services

Depending on the day of the week and time of day Services are held in different parts of St George's Chapel. The information that follows relates to what might be described as a 'standard week' but there will be occasions when this changes (for instance if concert staging has been erected in the Nave, a Service normally held there would be held elsewhere).

Below this list of Services is information relating to each area.

SUNDAYS

0830 Holy Communion – in the Quire.

1045 Sung Mattins – in the Quire.

1200 Sung Eucharist – in the Nave.

1715 Evensong – in the Nave.

MONDAYS TO SATURDAYS

0730 Mattins – in the Quire.

0800 Holy Communion - In one of the side Chapels – different ones each day of the week.

1200 on Fridays only. Holy Communion – in the Nave.

1715 Evensong (Evening Prayer on Wednesdays) – in the Quire.

Entry to St George's Chapel for Services is via the south door (three steps with handrail). There is an alternative step free access to which you can be shown by a member of the Chapel staff.



The south door leads directly into the Nave.

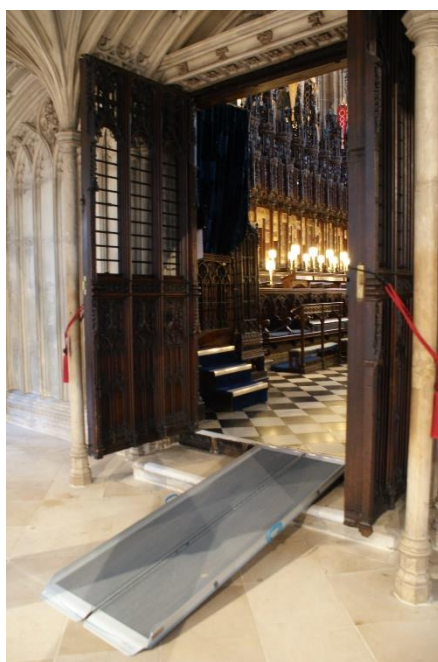
The Nave has a flat stone floor.



Access to **the Quire** for Services is via three steps with a handrailor...

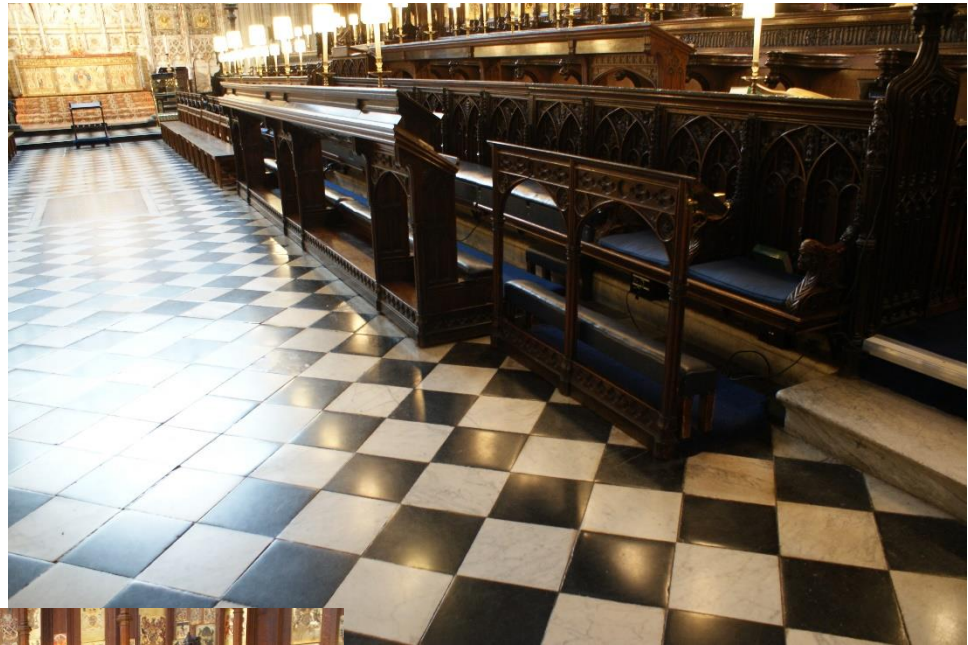


....via the first of the two ramps in the left hand photo below....



.....followed by two steps for which a temporary ramp (max load 300kg) is available.

Access to seating in the Quire can be up steps or is on benches.



Access to **side chapels** used at weekday 8am services of Holy Communion varies. Different side chapels are used each day.

The Rutland Chantry (left photo) has two steps to enter. The Bray Chantry (right photo) has no steps to enter.



For Services at the Hastings Chantry in the North Quire Aisle the congregation sits on chairs in the aisle (photo below). A similar layout is used for the Oxenbridge chantry in the South Quire Aisle.



Access to the Edward IV Chantry is via a stone spiral staircase.